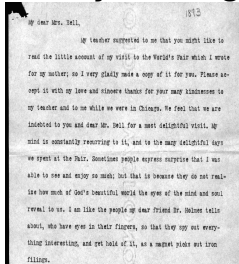


## Assessing with Primary Sources

**Grade Level:** 6

**Standard(s) or Objectives:** CCSS.ELA-LITERACY.RI.6.5: Analyze how a particular sentence, paragraph, chapter, or section fits into the overall structure of a text and contributes to the development of the ideas.  
CCSS.ELA-LITERACY.RI.6.4: Determine the meaning of words and phrases as they are used in a text, including figurative, connotative, and technical meanings.

### Library of Congress Resources:



Letter from Helen Keller to Mabel Hubbard Bell, August 20, 1893.  
Contributor Names: Mabel Hubbard Bell and Helen Keller.

<https://www.loc.gov/resource/magbell.12400303/?sp=1>

### Topic Background:

In the 1800s, written correspondences were still very common. Often, after a visit somewhere, the visitors sent a letter mostly to thank whoever made their trip experiences enjoyable. This correspondence is a letter by Helen Keller to Mabel Hubbard Bell, in 1893.

Excerpted from: The letter is excerpted from:  
<https://www.loc.gov/resource/magbell.12400303/?sp=1>

### Source(s) Used:

The source used for this assessment is a letter written by Helen Keller to Mabel H. Bell on August 20, 1893. It belongs to the Alexander Graham Bell family papers.

### Answer Key:

Question 1: D

Question 2: A

**Directions:** Read this excerpt of a letter and answer the questions that follow.

**Helen Keller's letter to Mabel Hubbard Bell- August 20, 1893**

indebted to you and dear Mr. Bell for a most delightful visit. My mind is constantly recurring to it, and to the many delightful days we spent at the Fair. Sometimes people express surprise that I was able to see and enjoy so much; but that is because they do not realize how much of God's beautiful world the eyes of the mind and soul reveal to us. I am like the people my dear friend Dr. Holmes tells about, who have eyes in their fingers, so that they spy out everything interesting, and get hold of it, as a magnet picks out iron filings.

**Question 1:** Why are lines 3-5 (“sometimes people express surprise that I was...”) important to the entire letter? (CCSS.RI.6.5)

- a) People tend to feel bad for people who are blind.
- b) The speaker, who is blind, does not get to enjoy everything in life.
- c) People do not think people who are blind can experience the world.
- d) The speaker is able to experience the world through different ways.

**Question 2:** In line 7, the author states “**who have eyes in their fingers**”. What statement best explains what the author means? (CCSS.RI.6.4)

- a) The person sees the world through the use of their fingers.
- b) The person has eyes on the tips of their fingers.
- c) The person is blind and unable to see the world.
- d) The person only depends on others to see the world.